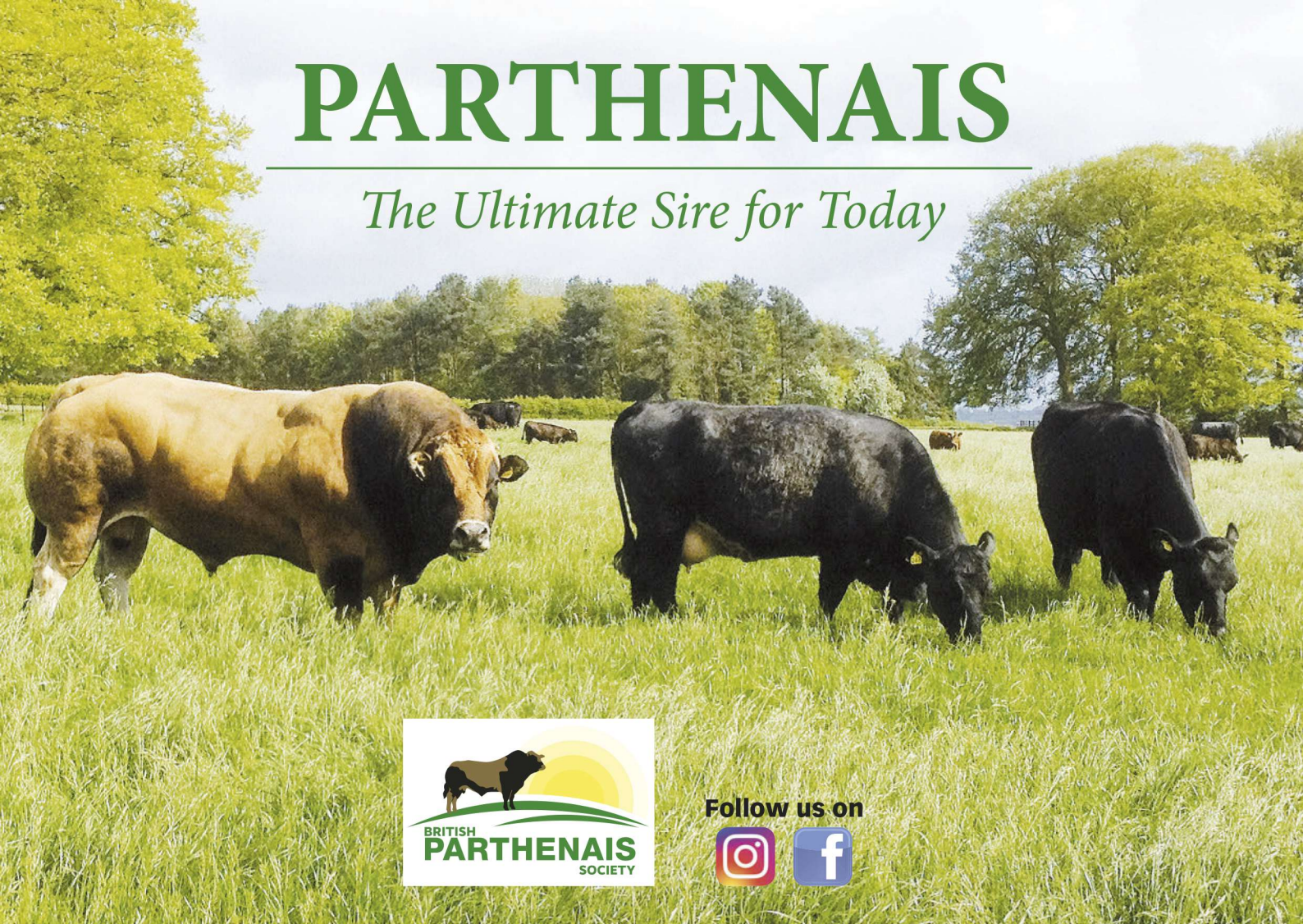


PARTHENAIS

The Ultimate Sire for Today



Follow us on





- **Attractive Double Muscled Cattle**
- **Generally Easier Calving**
- **Fertile, Hard Working Bulls**
- **Suits Most Systems**
- **Hard Black Feet**
- **Excellent Terminal Sire in Commercial Suckler and Dairy herds**
- **Parthenais sired Females Sought for Suckler Replacements**
- **High Killing Out % and Meat to Bone Ratio**
- **Superb Eating Quality Beef**
- **Lower Cholesterol than Chicken**
- **Steaks Cut from Forequarters**
- **Top Carcass Value**

Parthenais cattle originate from the Deux Sevres region in central France and are named after the town of Parthenay. They are one of the oldest French breeds – the Herd book was established back in 1893.

Historically, Parthenais cows were renowned for producing high fat milk, ideal for butter production. The breed was also used for draught work (hence their heavy, lean muscle.) This changed around 50 years ago, when the breed society established a program of improvements and placed an emphasis on the breed to produce high quality beef.

Parthenais cattle are now recognised as having the highest meat to bone ratio of all the French breeds.

The breed is double muscled, although not excessively so, and always weighs deceptively heavy. Cows typically weigh around 850 kilos, mature bulls 1000-1300 kilos. Calving surveys highlight that 94% of full bloods are unassisted.

This adaptable breed thrives on all types of terrain and copes well in most climates. They perform well off grass and suit most systems. Parthenaise cattle are also rated highly for their resistance to disease.

Beef quality is superb. Their high quality, lean meat (at only 8.8% fat) fetches a premium in the French market. Another plus is their killing-out percentage, (over 67%) one of the highest of all continental breeds.

Due to the Parthenais' excellent finishing qualities crossbred animals and carcasses when exhibited continually make prize winners, and invariably top the commercial markets with prices.

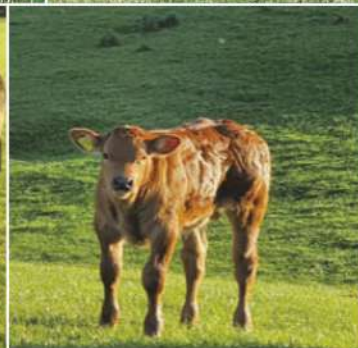
**Contact the British Parthenais Cattle Society for more information,
breeders, bulls, females, crossbreeds, embryos and semen**

PARTHENAIS

Powerful • Profitable • Pleasurable



Pedigree Parthenais Females



THE BRITISH PARTHENAIS CATTLE SOCIETY

Breed Secretary Miss Rebecca Hurd, Whitefield Farm, Whitefield, Wiveliscombe, Somerset, TA4 2UW

Tel: 07584130061 • email: britishparthenaisociety@gmail.com • www.parthenais.co.uk